

07

Mining

BUSINESS VERTICALS

GUIDE TO RELIABLE AND
SECURE SOLUTIONS

ISTC[®] CORP.

■ We are experts!



The mining industry demands more and more specific solutions, since it has become one of the most important focuses for public and private investments, for this reason one of its objectives is to modernize its processes where technology plays a fundamental role. **ISTC** has technology for harsh environments providing complete video surveillance solutions.

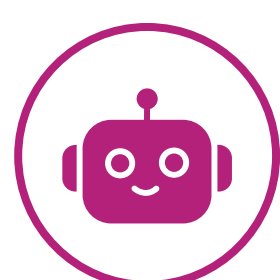
At **ISTC** we have a robust portfolio of products which allows us to provide innovative security, automation and connectivity solutions for our clients in **Latin America and the Caribbean**.

ISTC provides complete solutions and comprehensive services for your projects, allowing you to cover needs and great challenges for the sector.



**Visit our
Website**

Find the solution you need!



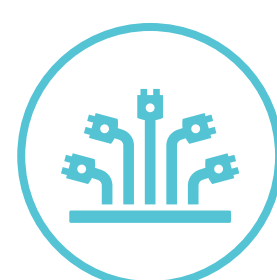
Specialty
products



Video
surveillance



Control and
automation
BMS



IT &
Connectivity



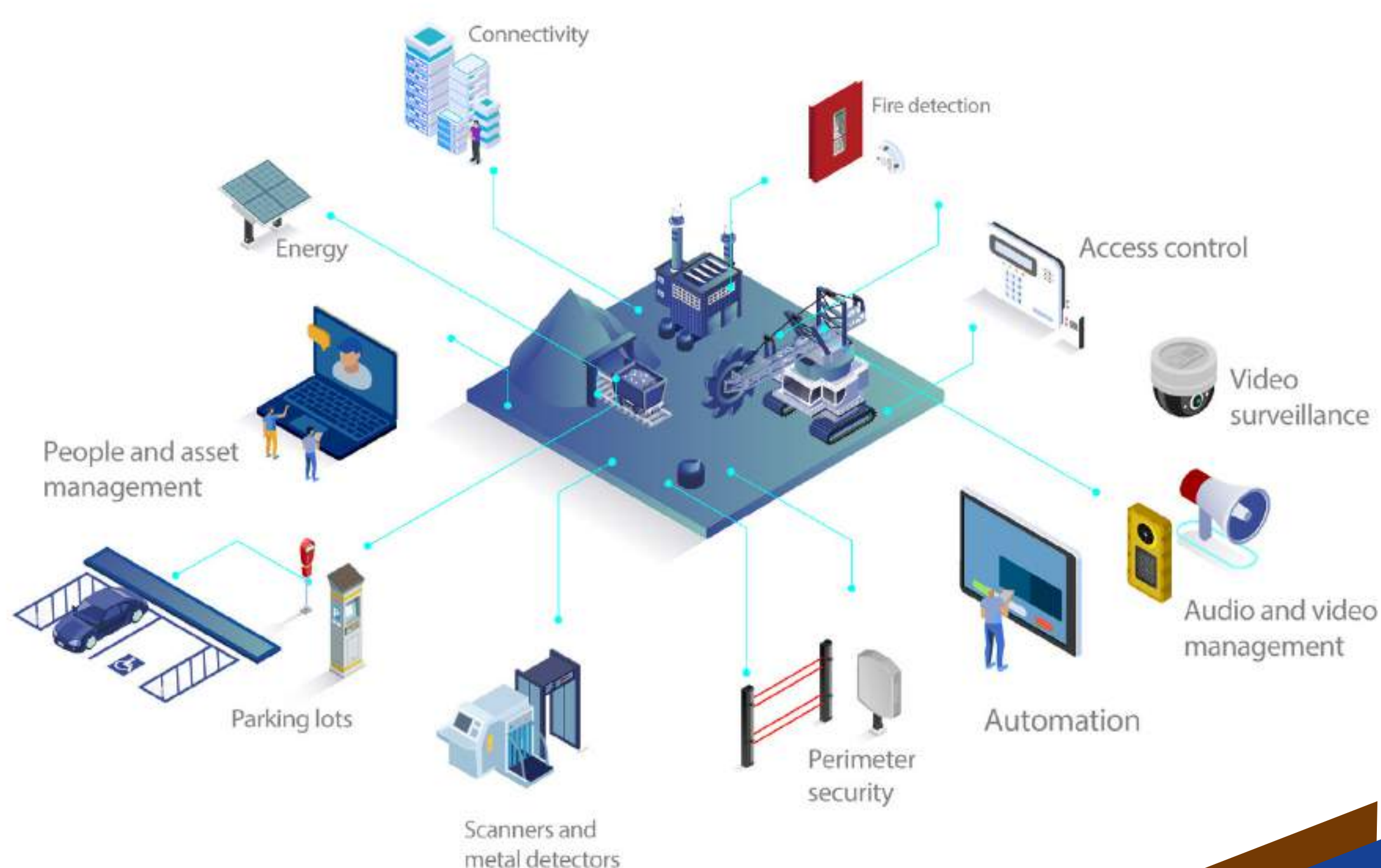
Intrusion
systems



Access
control



Detection and
suppression



■ Featured solutions

ISTC offers a large portfolio with the most representative brands in the world, with which any type of solution can be offered for the mining sector, such as Telecommunications infrastructure, Electronic security, Perimeter security, Entry security, Specialized systems, among other solutions.

A decorative graphic element consisting of a diagonal split between a brown upper section and a blue lower section, both with a subtle texture.

> Electronic security:

- Video surveillance
- Thermal cameras
- Access control
- Software
- AI-based video analytics
- Intrusion systems
- Specialized fire detection for mining
- Artificial intelligence
- Control and automation
- Mass notification
- Mobile video solutions
- Lighting solutions

> Specialized systems:

- Vehicle barriers
- Control rooms
- Intercoms
- Servers and storage

> Control of people and assets:

- Centralized personnel management
- Employee operability metrics
- Real-time traceability of assets
- Verification of the status of the assets (machines operating or under maintenance)

Radars for Perimeter Protection

ISTC Provides the best complement for video surveillance systems, our radars detect and track simultaneously, allowing a high range in the coverage area, providing advanced warning and response through automatic alarms, without being affected by weather adversities.



> Audio systems:

- Intercoms for industrial environments

> Telecommunications infrastructure:

- Structured cabling
- XGS-PON solutions
- Radio links
- Optical fiber
- Active teams
- IoT solutions
- UPS

> Photovoltaic energy systems:

- Solar panels
- Electrical distribution management system

> Wireless transmission:

- Radio links

> Automation and management systems:

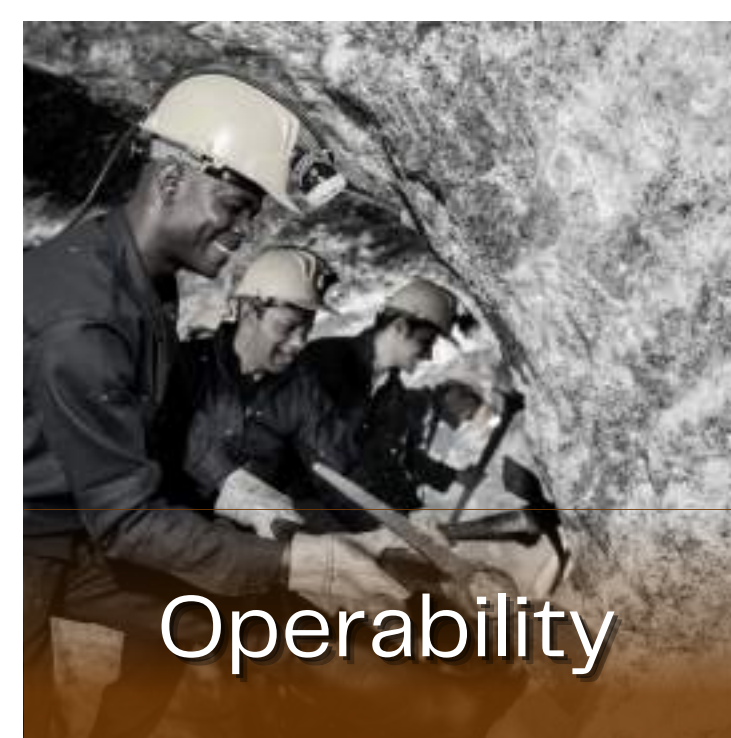
- System integration

> Access security:

- Metal detectors
- Specialized video surveillance
- Access systems (pedestrian turnstiles)

> Perimeter security:

- Specialized cameras
- Buried fiber or on mesh / perimeter
- Radars



Building Management Systems (BMS)

A BMS or Building Management System allows the automation and centralized control of buildings to turn them into true "intelligent buildings".

Advantage (BMS):

It allows centralized control and supervision of all elements of the building. It facilitates the rapid detection of incidents for preventive maintenance. Automating monitoring tasks increases staff productivity. Provides detailed consumption information that promotes energy efficiency. The improvement of the management increases the comfort and security of the users of the building.

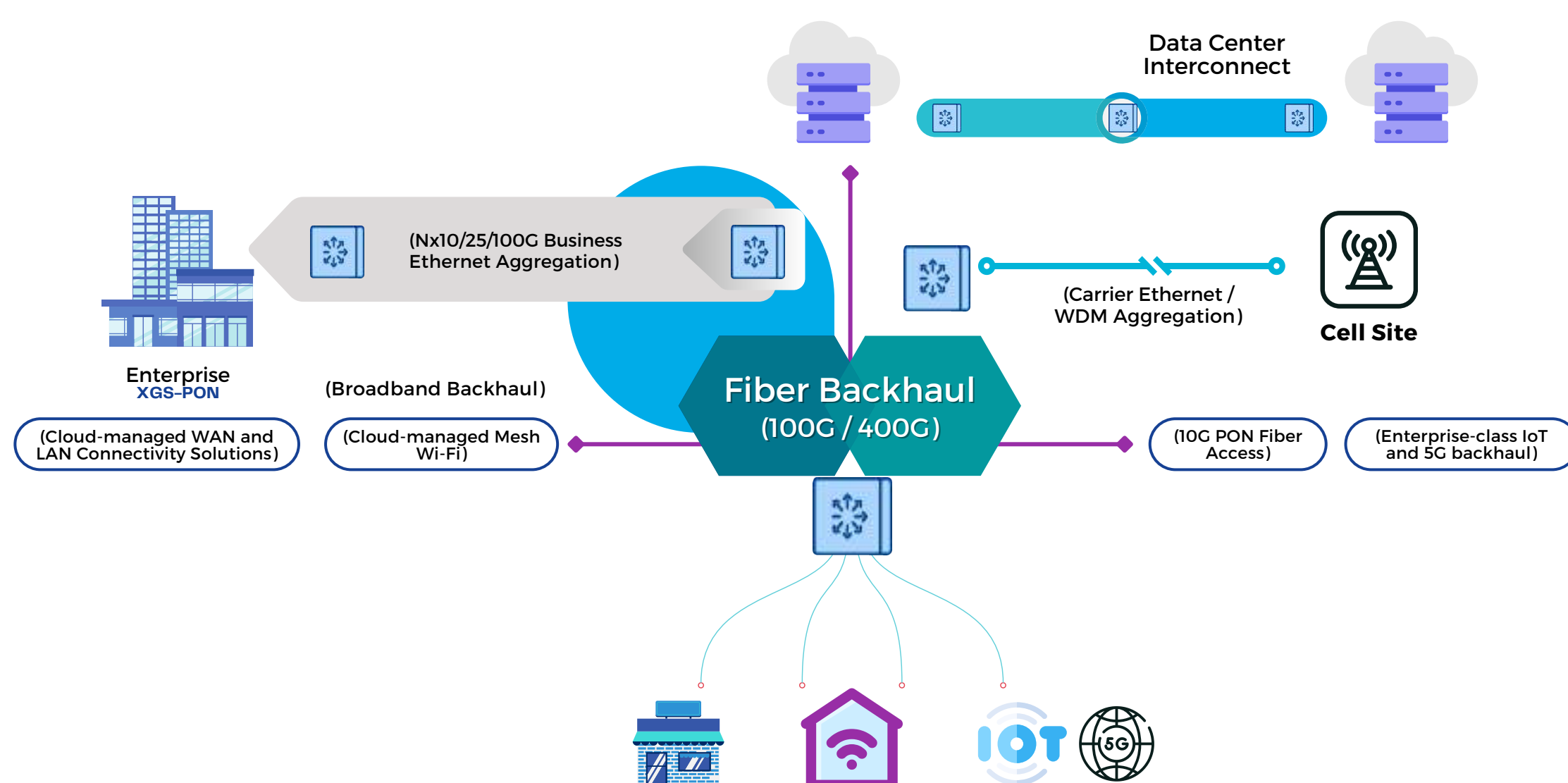
Featured Solutions:

- Native Integration
- Systems interoperability
- Integrations in unibrand and multibrand solutions

Passive Optical Networks (XGS-PON)

A great challenge in telecommunications networks is to build an optimal and reliable medium, for this **ISTC** offers DWDM and XGS-PON solutions; of which we have had great success stories in the region. From there we guarantee high bandwidth, future growth, inclusion of various technologies, redundancy and long distance coverage.

Comprehensive Network Security and Synchronization





Security challenges in MINING



45%

· Of **exports** come from the mining sector.



· The mining sector requires **durable** video and audio surveillance **solutions** adapted to extreme temperatures.

10%



· Of **GDP** per region.

Presence

USA & CARIBBEAN

miami@istccorp.com
caribbean@istccorp.com

MEXICO

mexico@istccorp.com

CENTRAL AMERICA

centroamerica@istccorp.com

ANDEAN REGION

andina@istccorp.com

PERU

peru@istccorp.com

ECUADOR

ecuador@istccorp.com

BRAZIL

brasil@istccorp.com

SOUTHERN CONE

conosur@istccorp.com

CHILE

chile@istccorp.com

ISTC CORP.
#Innovating
Together



Follow us on
our networks!

 @istc_corp

 @ISTC Corp

 @istc.corp

 @ISTC_Corp

Download our
LINE CARD



For more information, contact us:
marketing@istccorp.com



Mining

GUIDE TO RELIABLE AND SECURE SOLUTIONS

Get to know our 15 verticals!

