

03

Retail

BUSINESS VERTICALS



GUIDE TO RELIABLE AND
SECURE SOLUTIONS

ISTC[®] CORP.

■ We are experts!



ISTC has comprehensive solutions to cover project needs in the Retail sector, covering Electronic security, Building Automation, Video analytics, Fire detection and Extinction systems, among others, which allows operational efficiency in the field of security.

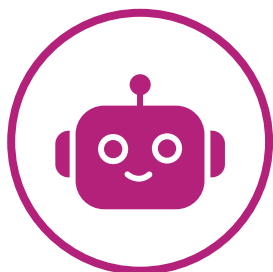
ISTC supplies complete solutions and integral services for projects, automating the operation and security processes with the latest technology, in response to the client's needs.

We have a robust product portfolio which allows us to supply innovative security, automation and connectivity solutions for Latin America and the Caribbean.



Visit our Website

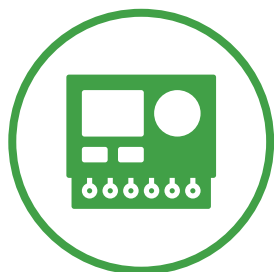
Find the solution you need!



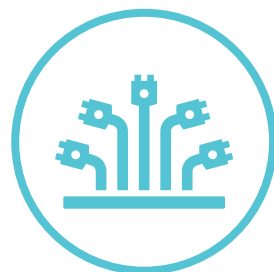
Specialty products



Video surveillance



Control and automation BMS



IT & Connectivity



Intrusion systems



Access control



Detection and suppression





■ Featured solutions

ISTC offers a large portfolio with the most representative brands in the world, with which you can access any type of solution for the retail sector such as: Telecommunications infrastructure, Parking systems, Audio system, Digital signage, Electronic security, Building Management System (BMS), IoT systems, among others.

> Telecommunications infrastructure:

- Structured cabling
- XGS-PON solutions
- Radio links
- Optical fiber
- IoT solutions
- UPS

> Photovoltaic energy systems:

- Solar panels
- Electrical distribution management system

> Parking systems:

- LPR plate recognition
- Guided parking management
- Vehicle location systems

> Audio system:

- Environmental audio system
- Message zoning

> Digital signage:

- Large format screens
- Screens for retail
- Video Walls

> Specialized systems:

- Automatic doors
- Vehicle barriers
- Monitoring rooms
- Servers and storage

> Servers and Storage:

- Storage
- Servers

Retail doors

ISTC supplies a complete range of solutions for excellent pedestrian doors for the Retail vertical, which are adaptable to different infrastructures, easy to install and with aesthetic solutions that are integrated into all types of furniture.



> Electronic security:

- Video surveillance
- Thermal cameras
- Access control
- Software
- Video Walls
- Intrusion systems
- Audio and video management
- Fire (detection, suppression, aspiration systems)
- Artificial intelligence
- Control and automation

> IoT Systems:

- Humidity sensors
- Thermometers
- Comfort management

> People and asset management:

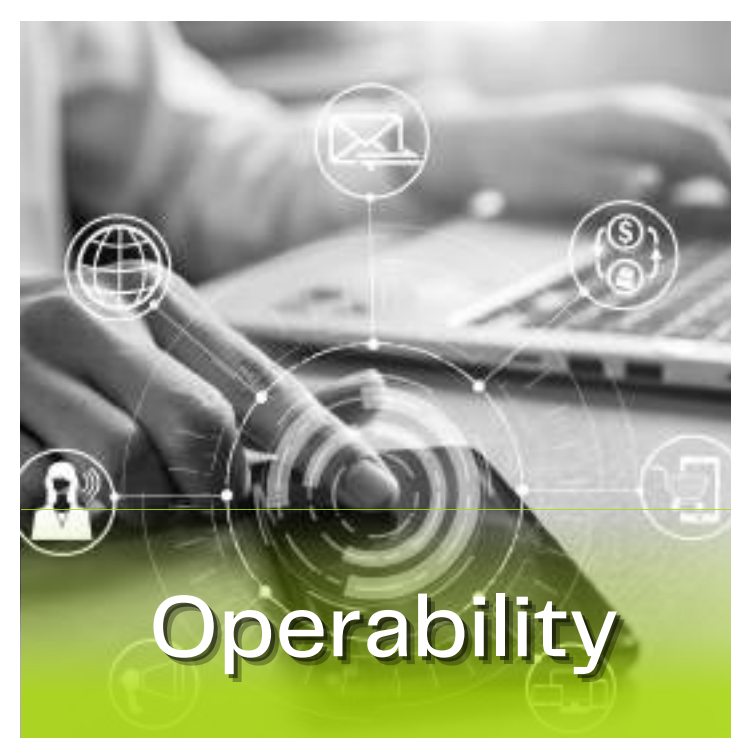
- Loss prevention
- Shift management

> Specialized analytics:

- Specialized analytics hot zones
- People counting
- People flow analysis

> Personal access security:

- Metal detectors
- Specialized video surveillance



Building Management Systems (BMS)

A BMS or Building Management System allows the automation and centralized control of buildings to turn them into true "intelligent buildings".

Advantage (BMS):

It allows centralized control and supervision of all elements of the building. It facilitates the rapid detection of incidents for preventive maintenance. Automating monitoring tasks increases staff productivity. Provides detailed consumption information that promotes energy efficiency. The improvement of the management increases the comfort and security of the users of the building.

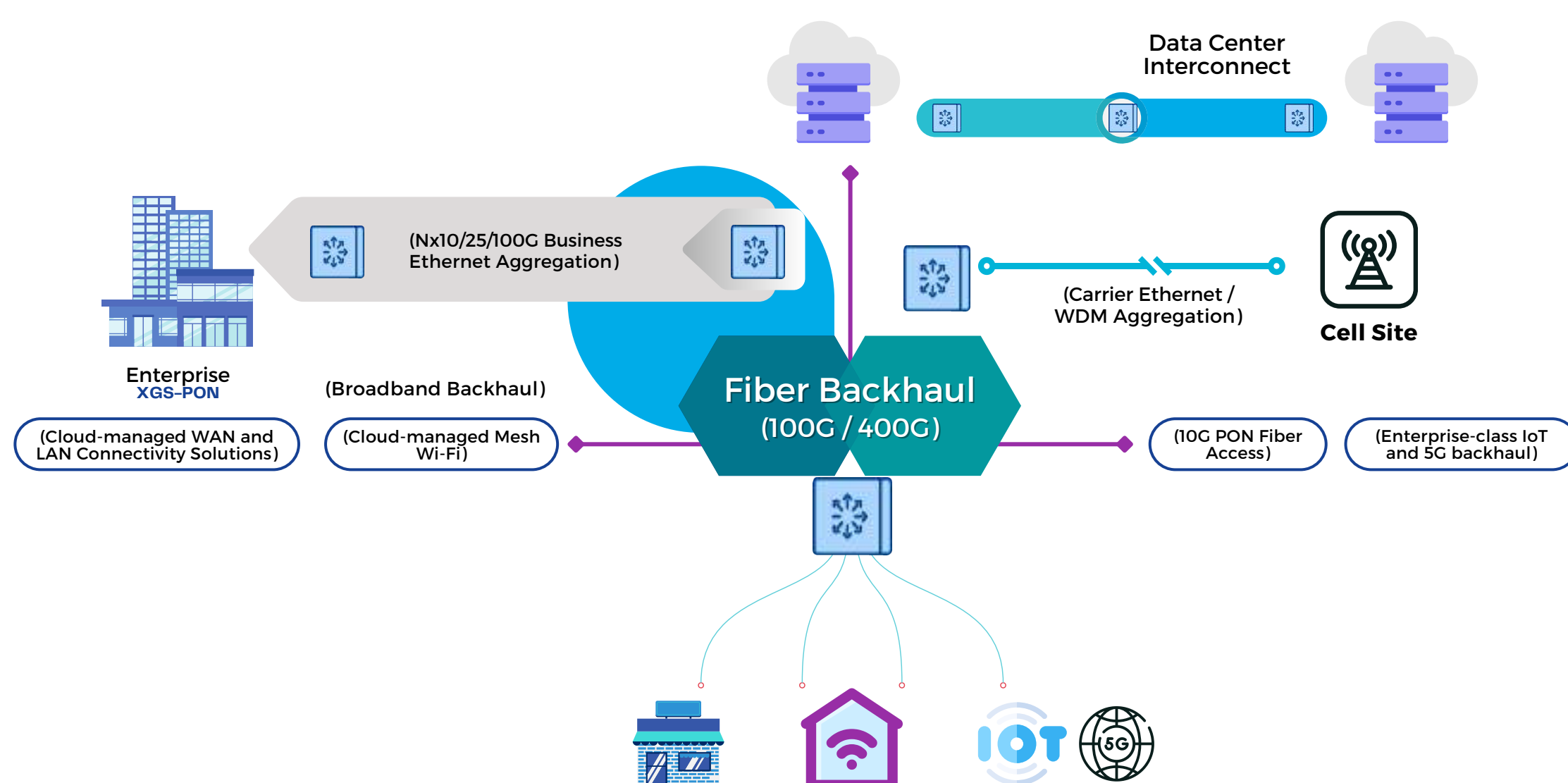
Featured Solutions:

- Native Integration
- Systems interoperability
- Integrations in unibrand and multibrand solutions

Passive Optical Networks (XGS-PON)

A great challenge in telecommunications networks is to build an optimal and reliable medium, for this **ISTC** offers DWDM and XGS-PON solutions; of which we have had great success stories in the region. From there we guarantee high bandwidth, future growth, inclusion of various technologies, redundancy and long distance coverage.

Comprehensive Network Security and Synchronization





Security challenges in RETAIL



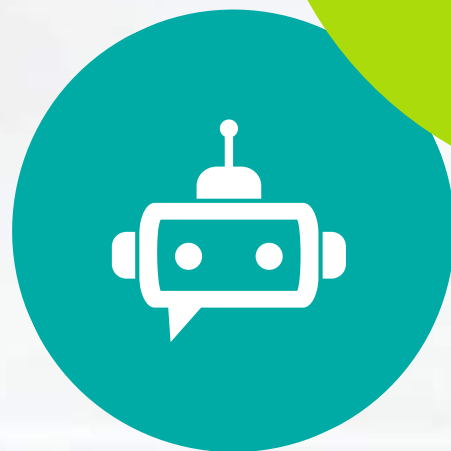
91%

· Of retailers see a higher number of **attacks**.



26%

· Of retailers can stop a **ransomware** attack.



73%

· Say **AI** will be crucial to future security challenges.

Presence

USA & CARIBBEAN

miami@istccorp.com
caribbean@istccorp.com

MEXICO

mexico@istccorp.com

CENTRAL AMERICA

centroamerica@istccorp.com

ANDEAN REGION

andina@istccorp.com

PERU

peru@istccorp.com

ECUADOR

ecuador@istccorp.com

BRAZIL

brasil@istccorp.com

SOUTHERN CONE

conosur@istccorp.com

CHILE

chile@istccorp.com

ISTC CORP.
#Innovating
Together



Follow us on
our networks!

 @istc_corp

 @ISTC Corp

 @istc.corp

 @ISTC_Corp

Download our
LINE CARD



For more information, contact us:
marketing@istccorp.com

Retail

GUIDE TO RELIABLE AND SECURE SOLUTIONS

Get to know our 15 verticals!

