

13

# Transportation

**BUSINESS VERTICALS**

GUIDE TO RELIABLE AND  
SECURE SOLUTIONS

**ISTC** CORP.



# ■ We are experts!



**ISTC** supplies electronic security solutions for the transport vertical such as capacity control in air and land terminals, solutions for river transport, land cargo security, capacity control with audio-analytical integration for stations or terminals, among others.

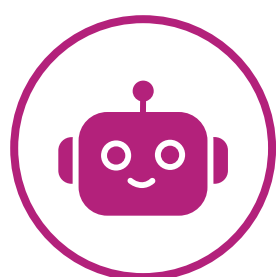
At **ISTC** we have a robust portfolio of products which allows us to supply innovative security, automation and connectivity solutions for **Latin America and the Caribbean**.

**ISTC** provides complete solutions and comprehensive services for projects, allowing to cover needs and great challenges for the Transportation sector.



Visit our Website

## Find the solution you need!



Specialty products



Video surveillance



Control and automation BMS



IT & Connectivity



Intrusion systems



Access control



Detection and suppression





## ■ Featured solutions

**ISTC** offers a large portfolio with the most representative brands in the world, with which any type of solution can be offered for the transportation sector, such as Electronic security, Specialized systems, Telecommunications infrastructure, among others.

### > Electronic security:

- Video surveillance
- Cameras for mobile systems (anti-vibration certifications)
- Access control
- Software
- Fire (suppression)
- Artificial intelligence
- High level analytics
- Control and automation

### > Specialized systems:

- Specialized video surveillance systems with video analytics
- Access counting system for registration and control
- GPS tracking
- Parking solutions
- Mobile recording systems, GPS

### > Telecommunications infrastructure:

- Specialized cabinets
- Radio links
- Optical fiber
- Active teams
- Cabinets
- UPS



**ISTC** offers specialized solutions for vehicle scanning through X-ray solutions, this for internal inspection of vehicles, containers, trucks that may include trailer, articulated vehicles. It applies to security points, border crossings, critical infrastructure, military buildings, sea and land ports.



The solutions for the transportation vertical, allow an efficient urban space in the smart and connected city. **ISTC** has a robust range of representative lines and brands in the market to cover the needs and thereby generate efficient, effective, fast and reliable mobility, sustainable.

- Mobile security solutions
- Active connectivity links
- Traffic analysis





# Building Management Systems (BMS)

A BMS or Building Management System allows the automation and centralized control of buildings to turn them into true "intelligent buildings".

## Advantage (BMS):

It allows centralized control and supervision of all elements of the building. It facilitates the rapid detection of incidents for preventive maintenance. Automating monitoring tasks increases staff productivity. Provides detailed consumption information that promotes energy efficiency. The improvement of the management increases the comfort and security of the users of the building.

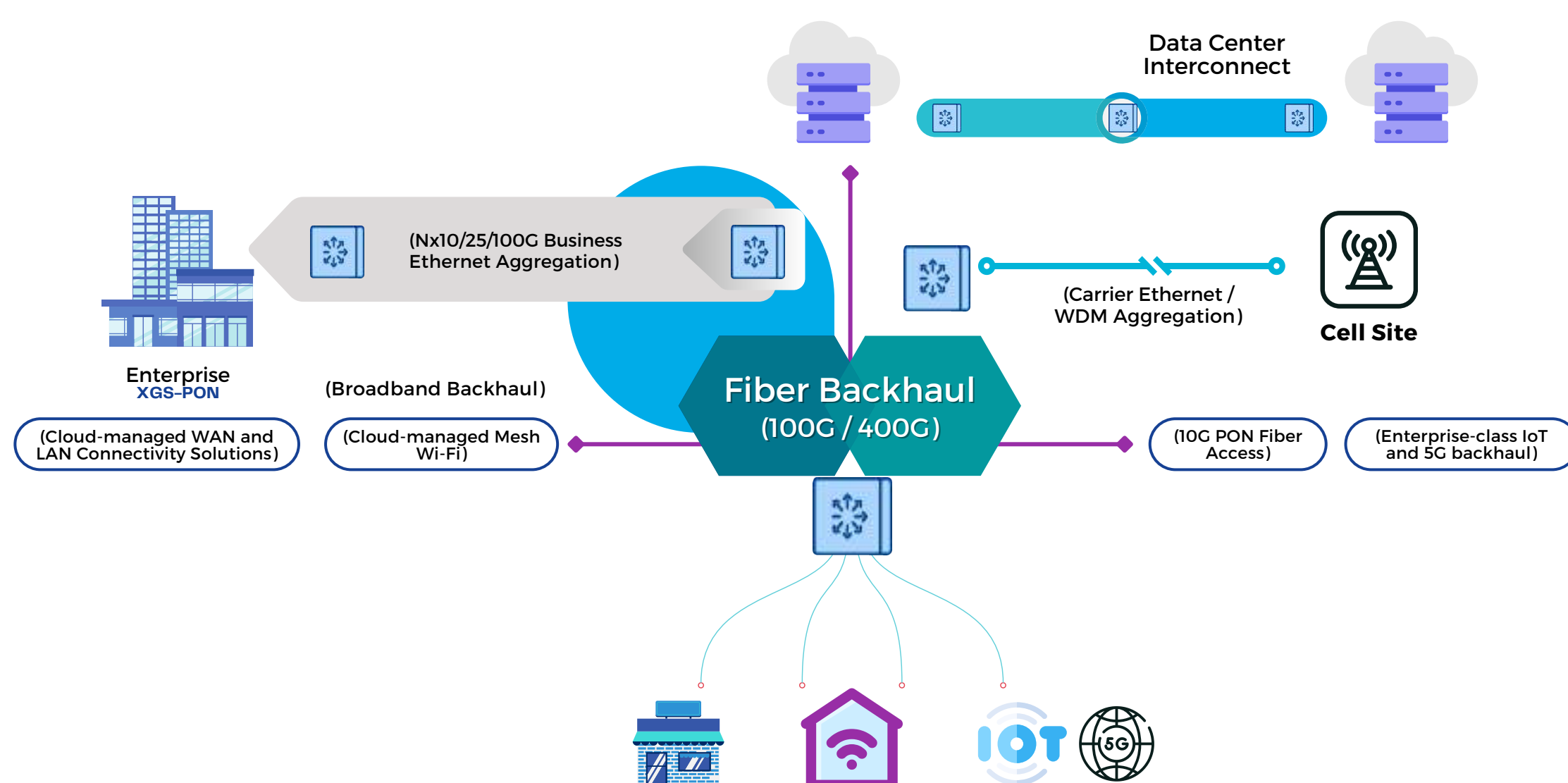
## Featured Solutions:

- Native Integration
- Systems interoperability
- Integrations in unibrand and multibrand solutions

# Passive Optical Networks (XGS-PON)

A great challenge in telecommunications networks is to build an optimal and reliable medium, for this **ISTC** offers DWDM and XGS-PON solutions; of which we have had great success stories in the region. From there we guarantee high bandwidth, future growth, inclusion of various technologies, redundancy and long distance coverage.

## Comprehensive Network Security and Synchronization



# TRANSPORTATION security challenges



78%

· Of passengers are concerned about transportation **safety**.



· **Electronic security** in the logistics sector increases productivity, allows real-time monitoring and reduces risks.



6%

· Of crimes globally are vehicle theft/assault.

## Presence

### USA & CARIBBEAN

miami@istccorp.com  
caribbean@istccorp.com

### MEXICO

mexico@istccorp.com

### CENTRAL AMERICA

centroamerica@istccorp.com

### ANDEAN REGION

andina@istccorp.com

### PERU

peru@istccorp.com

### ECUADOR

ecuador@istccorp.com

### BRAZIL

brasil@istccorp.com

### SOUTHERN CONE

conosur@istccorp.com

### CHILE

chile@istccorp.com

**ISTC** CORP.  
#Innovating  
Together





Follow us on  
our networks!

 @istc\_corp

 @ISTC Corp

 @istc.corp

 @ISTC\_Corp

Download our  
**LINE CARD**



For more information, contact us:  
[marketing@istccorp.com](mailto:marketing@istccorp.com)





# Transportation

GUIDE TO RELIABLE AND SECURE SOLUTIONS

**Get to know our 15 verticals!**

